

## Products and Services

Vante and PlasticWeld brands are recognized as global leaders, providing innovative production equipment for catheter and medical disposables manufacturers. Our platforms are recognized as industry leading technology for catheter tip forming, eye-forming, soft-tip bonding, butt welding, balloon bonding and hole drilling.

## Business Philosophy:

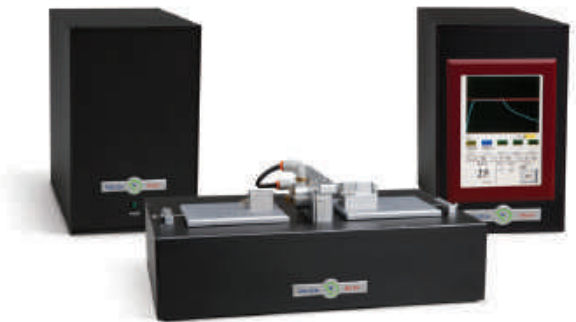
- Provide safe, easy to use, validatable equipment that quickly produces high quality parts with low scrap rates in a production environment.
- We have **4 manufacturing facilities** with **in-house EDM, 5 Axis CNC** and **ISO 9001:2015** Certification.
- A **technical specialist is assigned to your project** - and will lead it from the outset until completion.
- Aftermarket support group with specialized skills is ready to support you and your equipment for the life of the machine
- Vante and PlasticWeld are equipment providers only. **We do not provide contract manufacturing services that compete with our customer's business interests.**
- Multiple complementary divisions guarantee business stability for long term customer success.

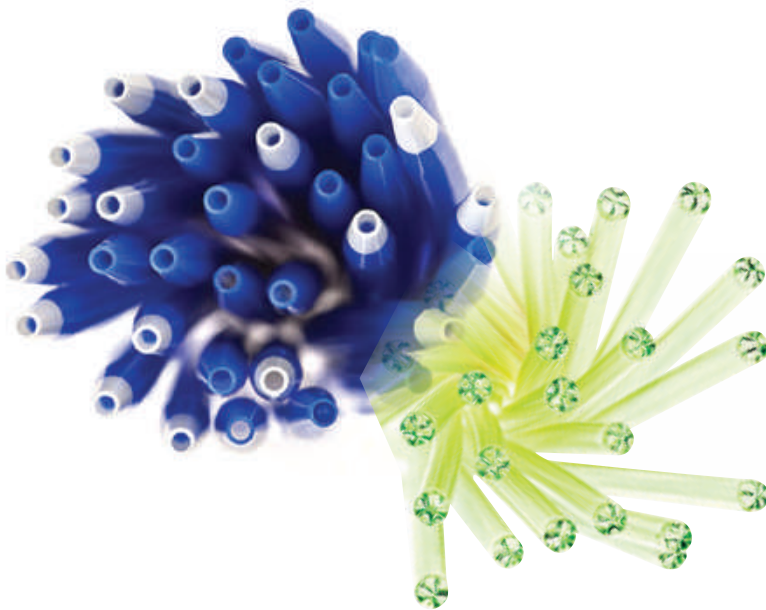
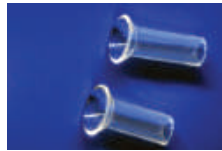
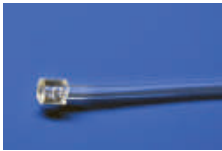
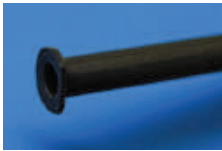
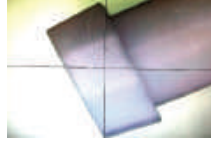
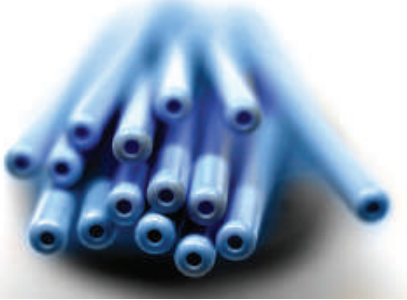
## Equipment Advantages:

- ✓ Closed Loop Temperature Control – better process control and yields
- ✓ Small Heat Zones – ideal for producing small, flash free parts
- ✓ Embedded Heat Coil – eliminate set-up time when switching molds
- ✓ Low Mass Molds- reduced cycle times
- ✓ Small Footprint- compact table top machines ready for integration with automation platforms

## Services:

- **Free assessment** of your application by our engineering team with 5,000+ mold design experience. Optimize design and processing strategy to ensure a robust manufacturing process.
- **Rapid prototype** value stream that can make custom tooling for engineering samples to your specification in less than 2 weeks
- **Certified tooling** delivers more than just metal hardware. Our turn-key solution includes process settings and measured parts to support validation qualification and rapid installation into production.
- Equipment solutions can be customized to meet throughput demands and integrate with automation platforms





Medical device engineers need equipment that produce high quality products at high yields and are easy to validate. Our tooling certification service is the turnkey solution to meet this need!

We don't just deliver metal hardware; our process delivers parts that meet your specification and support your validation activities. Our team of engineers certify over 300 tools annually and can apply their expertise to optimize your product. Here's how.

## Certification Process

### 1. Design for Manufacture

Our product design experts will review your project and advise recommended process strategies, design tolerances and geometries, material selection and other critical inputs to ensure a robust manufacturing process and risk mitigation.

### 2. Confirmation of Critical Specifications

Upon receipt of your order, our project engineers will provide a detailed project schedule and a formed part drawing which includes all critical dimensions of your part's design. Customer's will confirm all aspects of the part prior to design of custom tooling.

### 3. Process Development

Engineers identify process settings which will create 20 consecutive parts which meet customers desired specifications.

### 4. Inspection

A quality team will inspect and measure each sample part. This data and the samples will be included in the certification report which can be used for validation.

## Deliverables

- ✓ Recommended settings and process notes
- ✓ 20 measured parts
- ✓ Inspection data
- ✓ Formed part drawing reflecting critical specification
- ✓ Custom Tooling