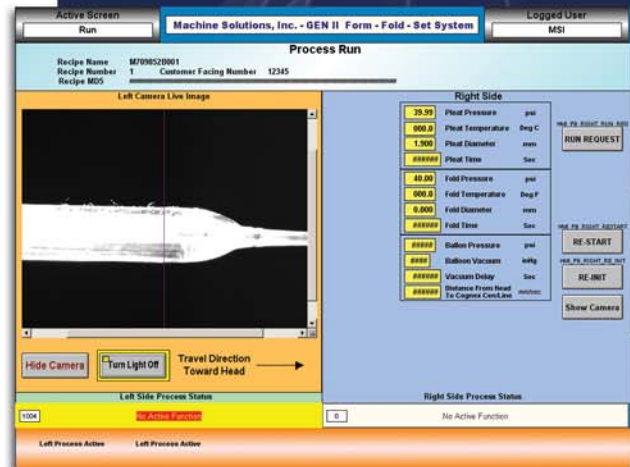


FFS760S

Balloon Catheter Pleating & Folding Equipment



The MSI FFS760S PTCA Balloon Catheter Pleating and Folding Equipment doubles machine output through the use of dual in-line Wavepleat™ and fold heads. This machine allows for processing on one set of heads while the other set is being loaded, effectively allowing a single operator to simultaneously control two machines. Integrated vision systems eliminate manual positioning variability and associated yield loss by automatically positioning balloons into the pleat/fold heads.

The FFS760S is PAC controlled with PC/HMI touch screen user interface. The machine base features dual automated top loading v-blocks with removable Press-Sure™ catheter sealing devices ideal for processing RX distal sub-assemblies. The product handling system can be equipped with a variety of optional luer attachment fixtures.

FFS760S Features

- Increased output and yields.
- In-line dual Wavepleat™ and Fold heads with independent operation.
- Cognex based automated vision alignment system.
- Automated top loading v-block with Press-Sure™ system.
- Minimal folded balloon profiles.



FFS760S

Balloon Catheter Pleating & Folding Equipment



FFS760S Equipment Specifications

Form/Fold/Set Base Unit Specifications

- Pneumatic controlled base with dual interchangeable pleat & fold heads.
- Digital encoder readout for pleat and fold head diameter position.
- Integrated Cognex machine vision.
- Dual automated handling system top loading v-block design.
- Automated Press-Sure™ Catheter Sealing System.
- Sensor activation.
- Micrometer stop for fold head compression diameter control.

Press-Sure™ Catheter Sealing System

- Removable drop-in units.
- PLC controlled pneumatic activated seals.
- Seals inner/outer member of a RX catheter distal sub-assembly.
- Allows for pressure/vacuum to be applied to balloon.
- Maintains pressure/vacuum for 45+ seconds after being removed from machine base.
- Standalone docking station for loading/unloading of distal sub-assembly.

Programmable Parameters

- Pleat/fold head dwell timer.
- Pleat/fold head close delay.
- Thermal temperature controls.
- Vacuum delay.
- Handling system speed.
- Balloon pressure.
- Pleat/Fold activation pressure.

Pleat Head Specifications

- Two (2) Wavepleat™ head with customer specified pleat/segment design, 60mm length.
- Heater junction box with LED indicators.

Fold Head Specifications

- Two (2) Folding mechanisms with open diameter of 8.0 mm, 60 mm length.
- Ten segment heated stainless steel fold head design.
- Heater junction box with LED indicators.

Options

- Simpler pneumatic connectors.
- Integrated barcode scanning.
- Servo activation system.

Summary of Spec Data

<i>Power Requirements</i>	110 or 220 VAC
<i>Pneumatic Requirement</i>	100psi
<i>Thermal Compression Control</i>	Ambient to 100°C
<i>Balloon Pressure</i>	0 – 50psi
<i>Balloon Placement Accuracy</i>	±0.25mm*
<i>Balloon Vacuum</i>	Up to 600 mmHg
<i>Units of Measure</i>	User Selectable
<i>Profile Storage Capacity</i>	999
<i>CE Certified</i>	Yes
<i>General Warranty</i>	1 Year

*For typical product configurations.

FFS760S Machine Dimensions

- Shipping Weight: 400lbs (181kg)
- Machine Weight: 250lbs (113kg)
- Height: Deck 30" (762mm) Overall 50" (1270mm)
- Width: 18" (457mm)
- Depth: 30" (762mm)