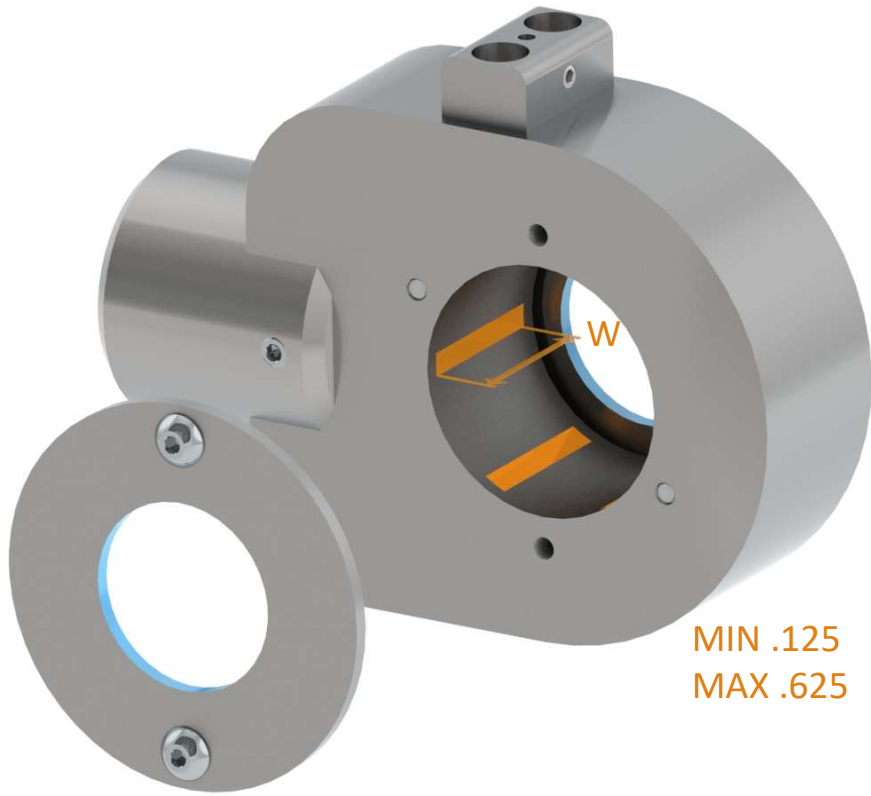
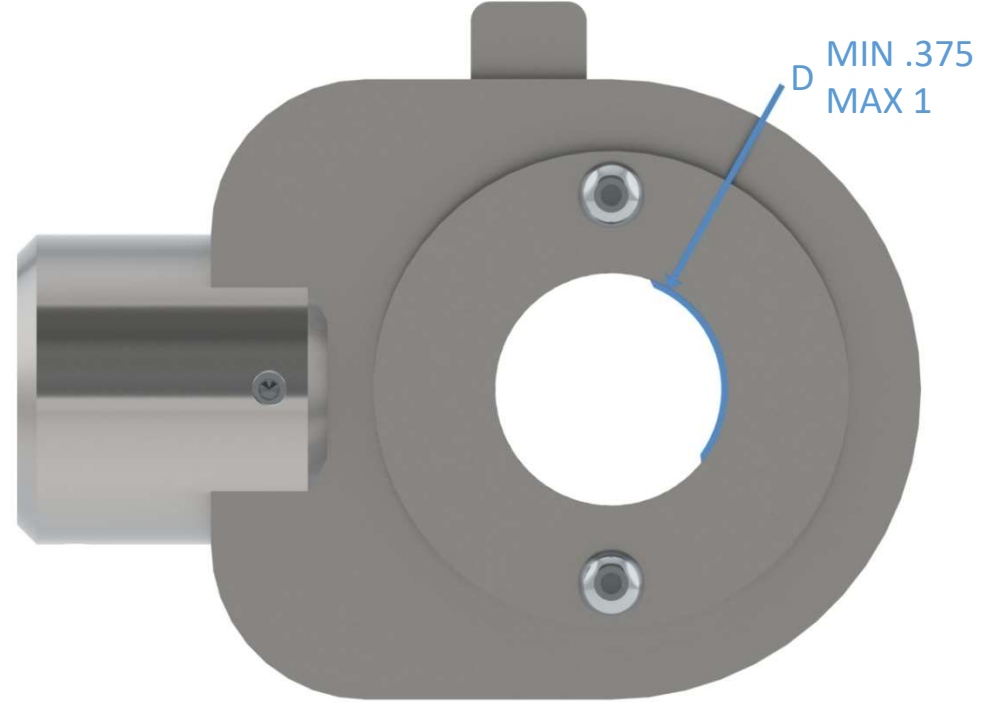


# Multi Port Nozzle M360



MIN .125  
MAX .625

END PLATE REMOVED FOR CLARITY IN DEFINING W



MIN .375  
MAX 1

Specify Width between .125" and .625" W= \_\_\_\_\_

## "W"-Exit Air Width

Exit air width is highlighted in orange in the image above and is the internal distance between nozzle end caps.

Exit air width is chosen based on the process performed

Example: for an overlap joint the nozzle width will equal the overlap length. For laminations we recommend maximum width (.500")

Specify Diameter between .375" and 1" D= \_\_\_\_\_

## "D"-Nozzle Diameter

Nozzle diameter is highlighted in blue in the image above.

For Nozzle diameter sizing add .250" to the diameter of the parts to be positioned in the nozzle.

Example: For material diameter .100" the nozzle diameter will be .350"

